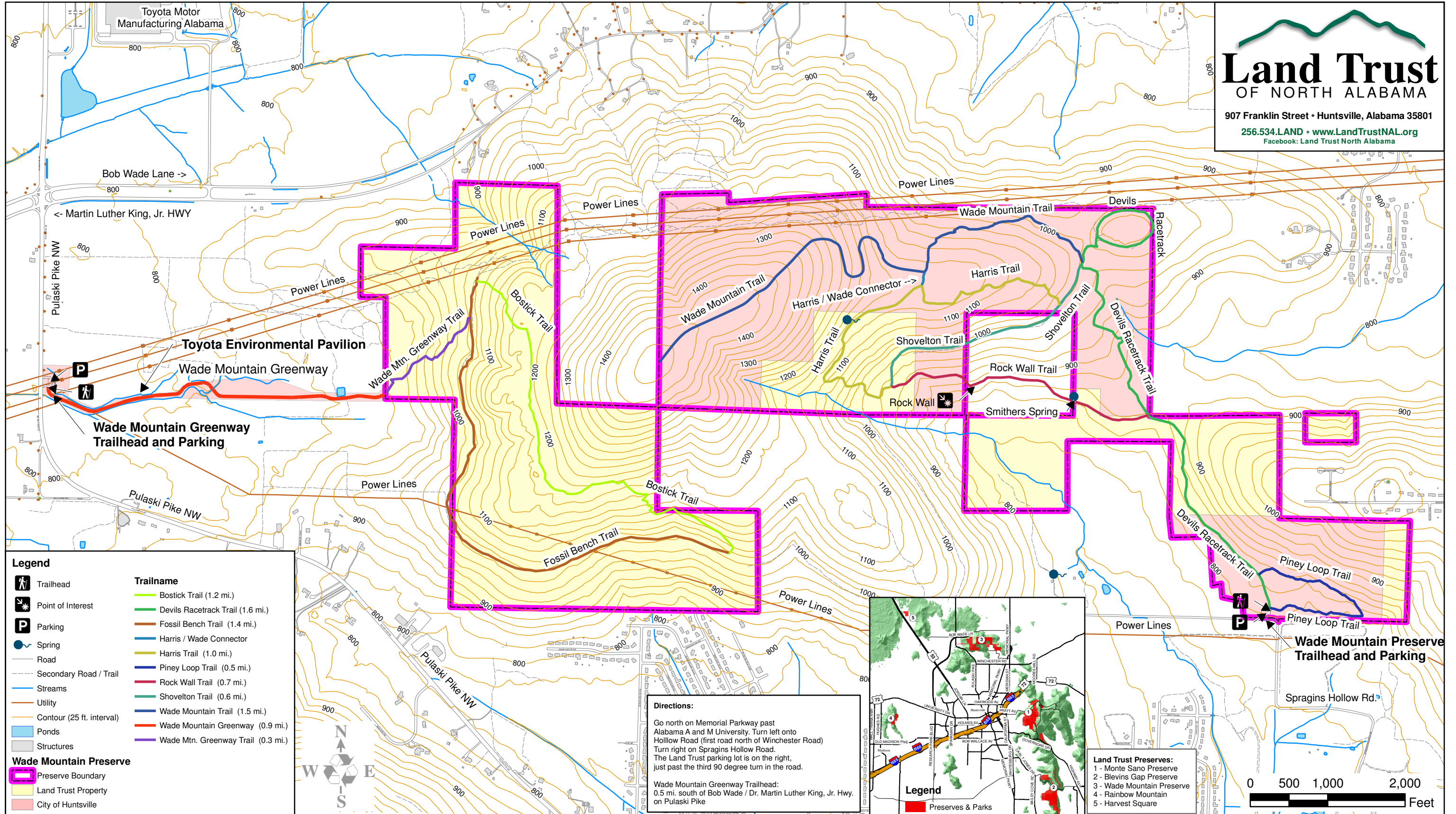


# Wade Mountain Preserve

**Land Trust**  
OF NORTH ALABAMA

907 Franklin Street • Huntsville, Alabama 35801  
256.534.LAND • www.LandTrustNAL.org  
Facebook: Land Trust North Alabama



**Legend**

- Trailhead
- Point of Interest
- Parking
- Spring
- Road
- Secondary Road / Trail
- Streams
- Utility
- Contour (25 ft. interval)
- Ponds
- Structures

**Trailname**

- Bostick Trail (1.2 mi.)
- Devils Racetrack Trail (1.6 mi.)
- Fossil Bench Trail (1.4 mi.)
- Harris / Wade Connector
- Harris Trail (1.0 mi.)
- Piney Loop Trail (0.5 mi.)
- Rock Wall Trail (0.7 mi.)
- Shovelton Trail (0.6 mi.)
- Wade Mountain Trail (1.5 mi.)
- Wade Mountain Greenway (0.9 mi.)
- Wade Mtn. Greenway Trail (0.3 mi.)

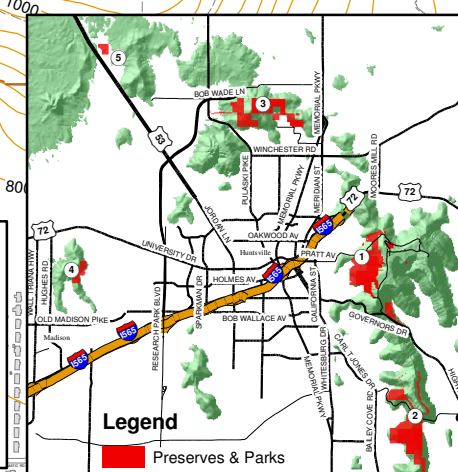
**Wade Mountain Preserve**

- Preserve Boundary
- Land Trust Property
- City of Huntsville

**Directions:**

Go north on Memorial Parkway past Alabama A and M University. Turn left onto Hollow Road (first road north of Winchester Road). Turn right on Spragins Hollow Road. The Land Trust parking lot is on the right, just past the third 90 degree turn in the road.

Wade Mountain Greenway Trailhead:  
0.5 mi. south of Bob Wade / Dr. Martin Luther King, Jr. Hwy. on Pulaski Pike



**Land Trust Preserves:**

- 1 - Monte Sano Preserve
- 2 - Blevins Gap Preserve
- 3 - Wade Mountain Preserve
- 4 - Rainbow Mountain
- 5 - Harvest Square

